

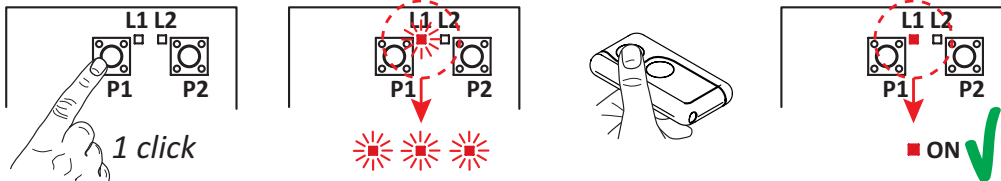
1. RECEIVER / REMOTE CONTROLS compatibility table

F FIX CODE

R ROLLING CODE

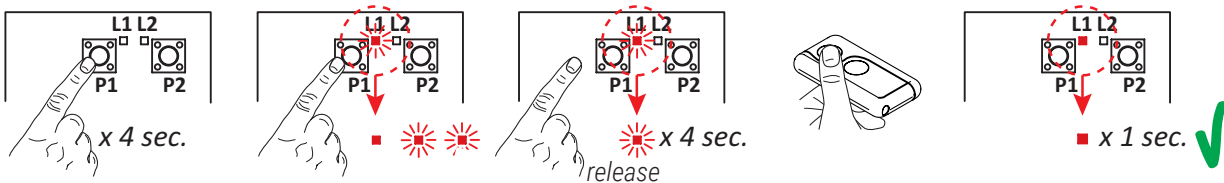
CODE	H93/RX20/I	H93/RX22A/I	H93/RX2RC/I	R93/RX12A/I	R93/RX20/U	R93/RX12A/U	R93/RX2RC/U
SYNUS/2 F R	✓	✓	✓	✓	✓	✓	✓
T80/TX2 F R	✓	✓	✓	✓	✓	✓	✓
E80/TX52R/2 F	✓	✓		✓	✓	✓	
E80/TX54R/2 F	✓	✓		✓	✓	✓	
E80/TX2R/RC R			✓				✓
E80/TX4R/RC R			✓				✓
M80/TX44R F	✓	✓		✓	✓	✓	

2. Programming a NEW transmitter



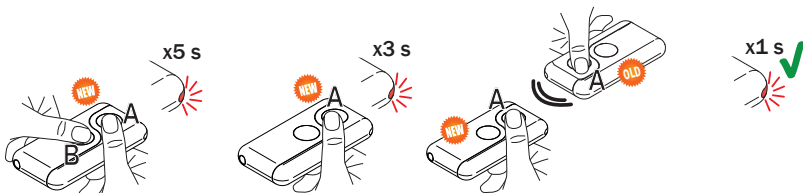
1. Press channel P1 (P2) of the receiver.
2. When LED L1 (L2) flashes 3 times (or 4 times with rolling code function), press any button on the transmitter.
3. If LED L1 (L2) remains steadily lit the transmitter has been stored correctly.

3. Cancellation of a transmitter



1. Press for 4 seconds button P1 or P2 on the receiver relative to the channel on which the code of the transmitter is to be cancelled. LED L1 or L2 switches on permanently to then flash rapidly.
2. Release button P1 or P2. LED L1 or L2 flashes rapidly for 4 s.
3. Press the button of the transmitter to be cancelled.
4. The LED L1 or L2 lights for 1 s.
5. The code was cancelled.
6. To cancel another code, repeat the procedure.
7. NOTE: If the code was not stored, LED L1 or L2 flashes rapidly.

4. Copying a transmitter



1. Press buttons A and B on the NEW transmitter simultaneously.
2. The LED flashes for 5 s.
3. Hold button (A) only on the NEW transmitter you want to store.
4. The LED flashes 3 s.
5. Hold the previously stored transmitter as close as possible to the NEW transmitter.
6. Press button (A) on the OLD transmitter.
7. The LED lights for 1 s to confirm that the copy procedure was successful.